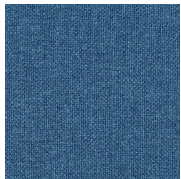
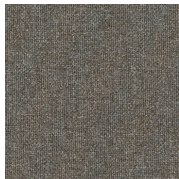


# Blanket (4H)

Seating Upholstery | Grade A



Beach  
4H-BE



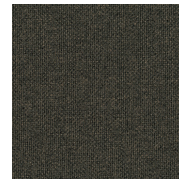
Bundle  
4H-BD



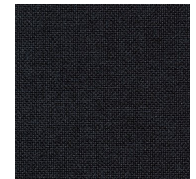
Camper  
4H-CM



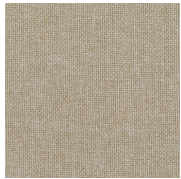
Campfire  
4H-CF



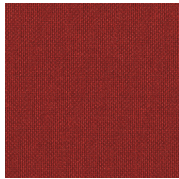
Cloak  
4H-CL



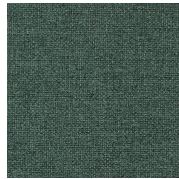
Cocoon  
4H-CC



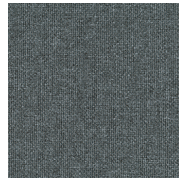
Feather  
4H-FE



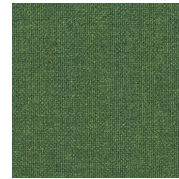
Firewheel  
4H-FW



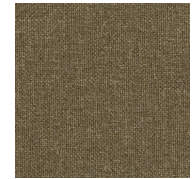
Forest  
4H-FR



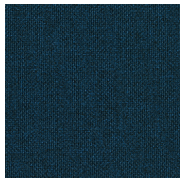
Fort  
4H-FT



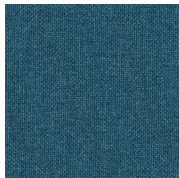
Grass  
4H-GR



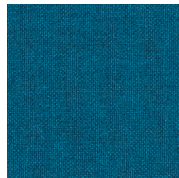
Hood  
4H-HD



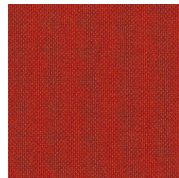
Mackinaw  
4H-MA



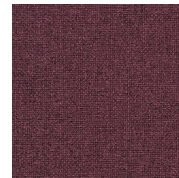
Manta  
4H-MT



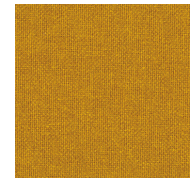
Picnic  
4H-PN



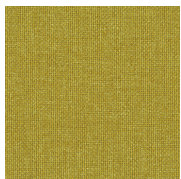
Poncho  
4H-PC



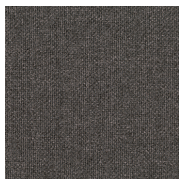
Port  
4H-PR



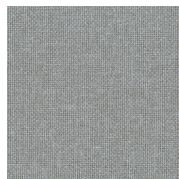
Swag  
4H-SW



Sweep  
4H-SP



Tuck  
4H-TK



Yawn  
4H-YA

HAWORTH

# Blanket (4H)

## Specifications

Color Code	Color Name
4H-BE	Beach
4H-BD	Bindle
4H-CM	Camper
4H-CF	Campfire
4H-CL	Cloak
4H-CC	Cocoon
4H-FE	Feather
4H-FW	Firewheel
4H-FR	Forest
4H-FT	Fort
4H-GR	Grass
4H-HD	Hood
4H-MA	Mackinaw
4H-MT	Manta
4H-PN	Picnic
4H-PC	Poncho
4H-PR	Port
4H-SW	Swag
4H-SP	Sweep
4H-TK	Tuck
4H-YA	Yawn

## Details

Brand	N/A
Grade	A
Program	Standard

## Technical Information

Composition	WOVEN
Content	50% POST CON RECYCLED POLY
Content	50% VIRGIN POLYESTER
Width	54 in
Pattern Repeat H	0.12 in
Pattern Repeat V	0.12 in
Directional	Yes
Image Shown	Downroll
Abrasion	100,000
Lightfastness	4.5@ 40 HOURS
Backing	No
Flammability	TB117-2013



Haworth fabrics meet or exceed ACT Standards

All colorways are subject to dye lot variation

HAWORTH is a registered trademark of Haworth, Inc.

© Haworth, Inc. All right reserved. 2020 6.20

haworth.com/surfaces | 800 344 2600

For additional information or product availability go to [surfaces.haworth.com](https://surfaces.haworth.com) Technical information subject to change.

**HAWORTH** is a registered trademark of Haworth, Inc.

© Haworth, Inc. All right reserved. 2020 6.20

[haworth.com/surfaces](https://haworth.com/surfaces) | 800 344 2600