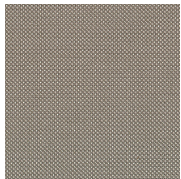
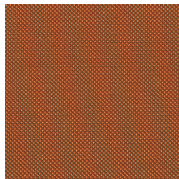


# English Tweed (4E)

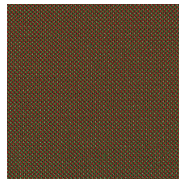
Seating Upholstery | Grade B



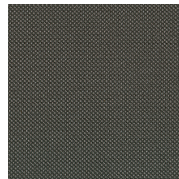
Biscuit  
4E-BS



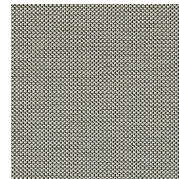
Blimey  
4E-BL



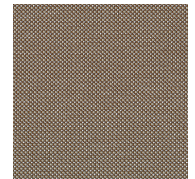
Bonnet  
4E-BN



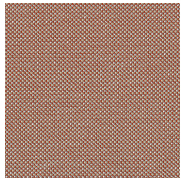
Cottage  
4E-CT



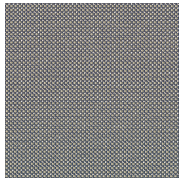
Doctor Who  
4E-DW



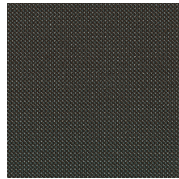
Fox  
4E-FX



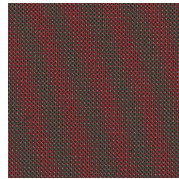
My Lady  
4E-ML



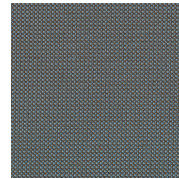
Oxford  
4E-XD



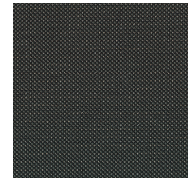
Pipe  
4E-PE



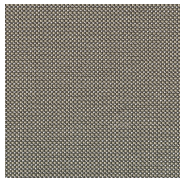
Sherry  
4E-SH



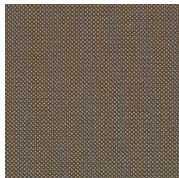
Stilton  
4E-SN



Stout  
4E-ST



Tea  
4E-TE



Tudor  
4E-TU

HAWORTH

# English Tweed (4E)

## Specifications

| Color Code | Color Name |
|------------|------------|
| 4E-BS      | Biscuit    |
| 4E-BL      | Blimey     |
| 4E-BN      | Bonnet     |
| 4E-CT      | Cottage    |
| 4E-DW      | Doctor Who |
| 4E-FX      | Fox        |
| 4E-ML      | My Lady    |
| 4E-XD      | Oxford     |
| 4E-PE      | Pipe       |
| 4E-SH      | Sherry     |
| 4E-SN      | Stilton    |
| 4E-ST      | Stout      |
| 4E-TE      | Tea        |
| 4E-TU      | Tudor      |

## Details

|         |          |
|---------|----------|
| Brand   | N/A      |
| Grade   | B        |
| Program | Standard |

## Technical Information

|                          |                           |
|--------------------------|---------------------------|
| Composition              | WOVEN                     |
| Content                  | 3% POST CON RECYCLED POLY |
| Content                  | 5% POST IND RECYCLED POLY |
| Content                  | 92% POLYESTER             |
| Width                    | 54 in                     |
| Pattern Repeat H         | 0.13 in                   |
| Pattern Repeat V         | 0.13 in                   |
| Directional              | Yes                       |
| Image Shown              | Downroll                  |
| Abrasion                 | 75,000                    |
| Weight (Per Linear Yard) | 18.78 OZ                  |
| Lightfastness            | 4@ 40 HOURS               |
| Backing                  | Yes                       |
| Flammability             | TB117-2013                |



Haworth fabrics meet or exceed ACT Standards

HAWORTH is a registered trademark of Haworth, Inc.

© Haworth, Inc. All right reserved. 2020 6.20

haworth.com/surfaces | 800 344 2600

All colorways are subject to dye lot variation

For additional information or product availability go to [surfaces.haworth.com](https://surfaces.haworth.com) Technical information subject to change.

**HAWORTH** is a registered trademark of Haworth, Inc.

© Haworth, Inc. All right reserved. 2020 6.20

[haworth.com/surfaces](https://haworth.com/surfaces) | 800 344 2600