

MOBI



krug

























FEATURES



MESH BACK

Available mesh colors: Grey, Black and White.



UPHOLSTERED SEAT & BACK

Optional removable covers can be quickly installed on Mobi products that were originally ordered with the removable cover option.



POLYMER SEAT & BACK

Available in Black, White, Grey, Taupe, Yellow, Red, Blue and Green.



STACKING

Mobi chairs are stackable to a maximum of 8 chairs high on the floor as well as dolly.



POLYMER ARM

Arms are available in the full range of polymer colors: Black, White, Grey, Taupe, Yellow, Red, Blue and Green.



COMBINATION COLORS

More than one polymer color can be selected in any combination for seats, backs and arms.



REMOVABLE AND REPLACEABLE COVERS

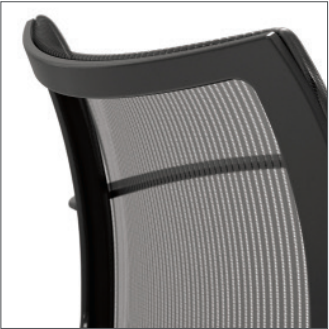
Mobi chairs are available with removable seat and removable back covers.



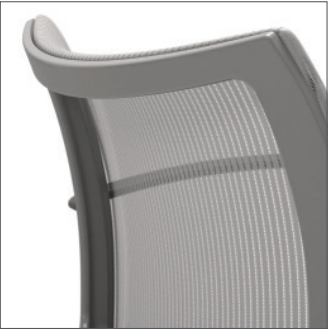
REMOVABLE & REPLACEABLE COMPONENTS

Seats and backs are removable for cleaning, and are field-replaceable if they become degraded.

MESH COLOR OPTIONS



Black



Grey

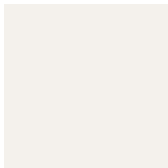


White

POLYMER COLOR OPTIONS



Black



White



Grey



Taupe



Yellow



Red



Blue



Green



krug