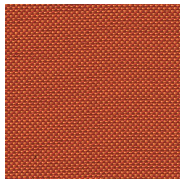
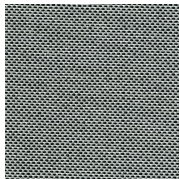


Pixel (2A)

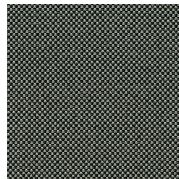
Seating Upholstery | Grade A



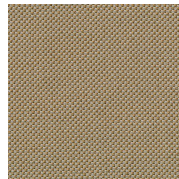
Byte
2A-BY



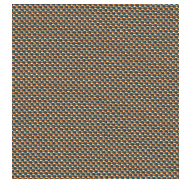
Dice
2A-DC



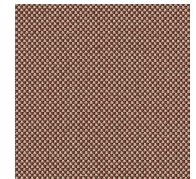
Dot
2A-DT



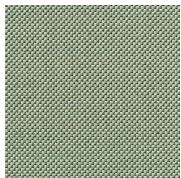
Easel
2A-EA



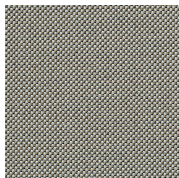
Flaunt
2A-FT



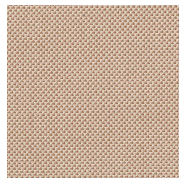
Focus
2A-FC



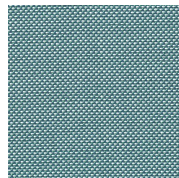
Folio
2A-FL



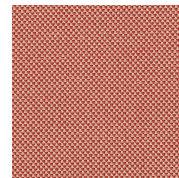
Home
2A-HM



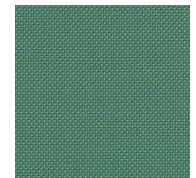
Ikon
2A-IK



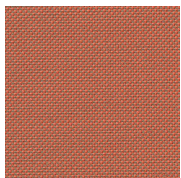
Imagine
2A-IM



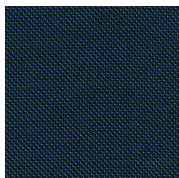
Node
2A-ND



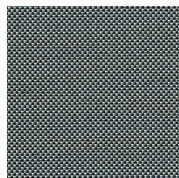
Pomp
2A-PM



Raster
2A-RA



Spectral
2A-SP



Tab
2A-TA



Vertex
2A-VE

HAWORTH

Pixel (2A)

Specifications

Color Code	Color Name
2A-BY	Byte
2A-DC	Dice
2A-DT	Dot
2A-EA	Easel
2A-FT	Flaunt
2A-FC	Focus
2A-FL	Folio
2A-HM	Home
2A-IK	Ikon
2A-IM	Imagine
2A-ND	Node
2A-PM	Pomp
2A-RA	Raster
2A-SP	Spectral
2A-TA	Tab
2A-VE	Vertex

Details

Brand	N/A
Grade	A
Program	Standard

Technical Information

Composition	WOVEN
Content	17% POST CON RECYCLED POLY
Content	32% POST IND RECYCLED POLY
Content	51% POLYESTER
Width	54 in
Pattern Repeat H	0.13 in
Pattern Repeat V	0.19 in
Directional	Yes
Image Shown	Downroll
Abrasion	57,000
Weight (Per Linear Yard)	13.39 OZ/LY
Lightfastness	CLASS 4 MIN @ 40 HOURS
Backing	Yes
Flammability	TB117-2013



Haworth fabrics meet or exceed ACT Standards

HAWORTH is a registered trademark of Haworth, Inc.

© Haworth, Inc. All right reserved. 2020 6.20

haworth.com/surfaces | 800 344 2600

All colorways are subject to dye lot variation

For additional information or product availability go to surfaces.haworth.com Technical information subject to change.

HAWORTH is a registered trademark of Haworth, Inc.

© Haworth, Inc. All right reserved. 2020 6.20

haworth.com/surfaces | 800 344 2600