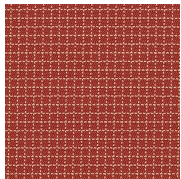
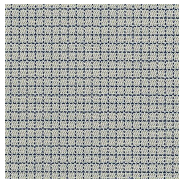


Squares (RA)

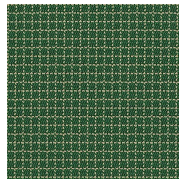
Seating Upholstery | Grade B



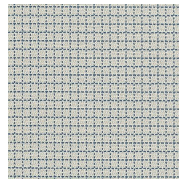
Colony
RA-CL



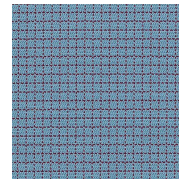
Copley
RA-CP



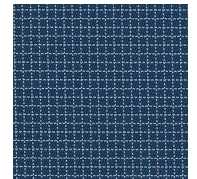
Farragut
RA-FR



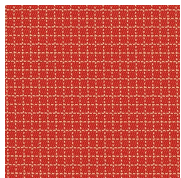
Fountain
RA-FN



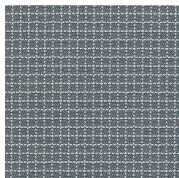
Franklin
RA-FK



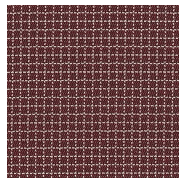
Freedom
RA-FD



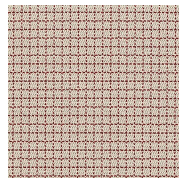
Harvard
RA-HR



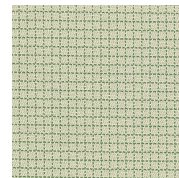
Jackson
RA-JC



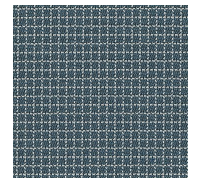
Kendall
RA-KN



Lafayette
RA-LF



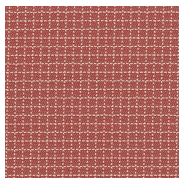
Madison
RA-MD



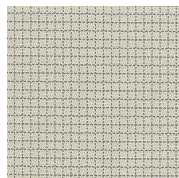
Market
RA-MR



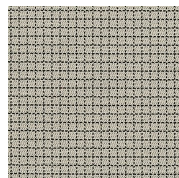
Niagara
RA-NG



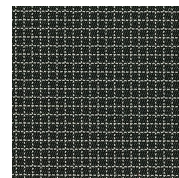
Old Town
RA-OT



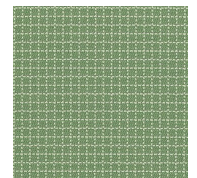
Pershing
RA-PR



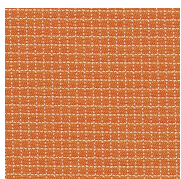
Post Office
RA-PO



Times
RA-TM



Union
RA-UN



Washington
RA-WS

HAWORTH

Squares (RA)

Specifications

Color Code	Color Name
RA-CL	Colony
RA-CP	Copley
RA-FR	Farragut
RA-FN	Fountain
RA-FK	Franklin
RA-FD	Freedom
RA-HR	Harvard
RA-JC	Jackson
RA-KN	Kendall
RA-LF	Lafayette
RA-MD	Madison
RA-MR	Market
RA-NG	Niagara
RA-OT	Old Town
RA-PR	Pershing
RA-PO	Post Office
RA-TM	Times
RA-UN	Union
RA-WS	Washington

Details

Brand	N/A
Grade	B
Program	Standard

Technical Information

Composition	WOVEN
Content	15% SOLUTION DYE POLY VIRGIN
Content	85% SOLUTION DYE POST CON POLY
Width	57 in
Pattern Repeat H	0.72 in
Pattern Repeat V	0.72 in
Directional	Yes
Image Shown	Downroll
Abrasion	100,000
Weight (Per Linear Yard)	15.05 OZ
Backing	Yes
Flammability	TB117-2013



Haworth fabrics meet or exceed ACT Standards

All colorways are subject to dye lot variation

HAWORTH is a registered trademark of Haworth, Inc.

© Haworth, Inc. All right reserved. 2020 6.20

haworth.com/surfaces | 800 344 2600

For additional information or product availability go to surfaces.haworth.com Technical information subject to change.

HAWORTH is a registered trademark of Haworth, Inc.

© Haworth, Inc. All right reserved. 2020 6.20

haworth.com/surfaces | 800 344 2600