



# Path<sup>TM</sup>

by Humanscale<sup>®</sup>

**A New  
Path  
Forward**

An aerial photograph of a coastline. The top half of the image shows deep blue ocean water with white, frothy waves crashing onto a sandy beach. The beach is a mix of light and dark sand, with several large, dark, jagged rock formations protruding from the water and onto the shore. The bottom left corner shows a rocky cliffside covered in green vegetation. The overall scene is dramatic and emphasizes the natural environment.

# Path is the world's most sustainable task chair

and builds on Humanscale's legacy of commitment to minimal, ergonomic, and eco-conscious design.

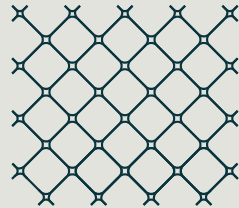
In Path, we combine our industry-leading engineering with a climate positive pledge. Each chair contains almost ten pounds of ocean plastic and is climate, energy, and water positive. This means that, with every Path chair produced, we leave the world quantifiably better off.

# Path upcycles more plastic waste than any other chair in the industry.

Path is an evolution of our commitment to sustainability: with each new product, Humanscale sets a higher standard for and finds ways to embed sustainability into our designs. Path upcycles more plastic waste than any other chair in the industry. Like all Humanscale chairs, it is produced to reduce our impact on the climate. While Path is new, it is our 26th net positive product, which is more than any other company has. Humanscale was the first to take this approach and we remain the only manufacturer in our industry to have products that are certified climate positive.

Humanscale goes beyond conventional net zero targets towards net positivity. No other company qualifies for the level and number of independent certifications as Humanscale:

- Healthy Materials
- Material Transparency
- Level® Certification
- Sustainable Operations



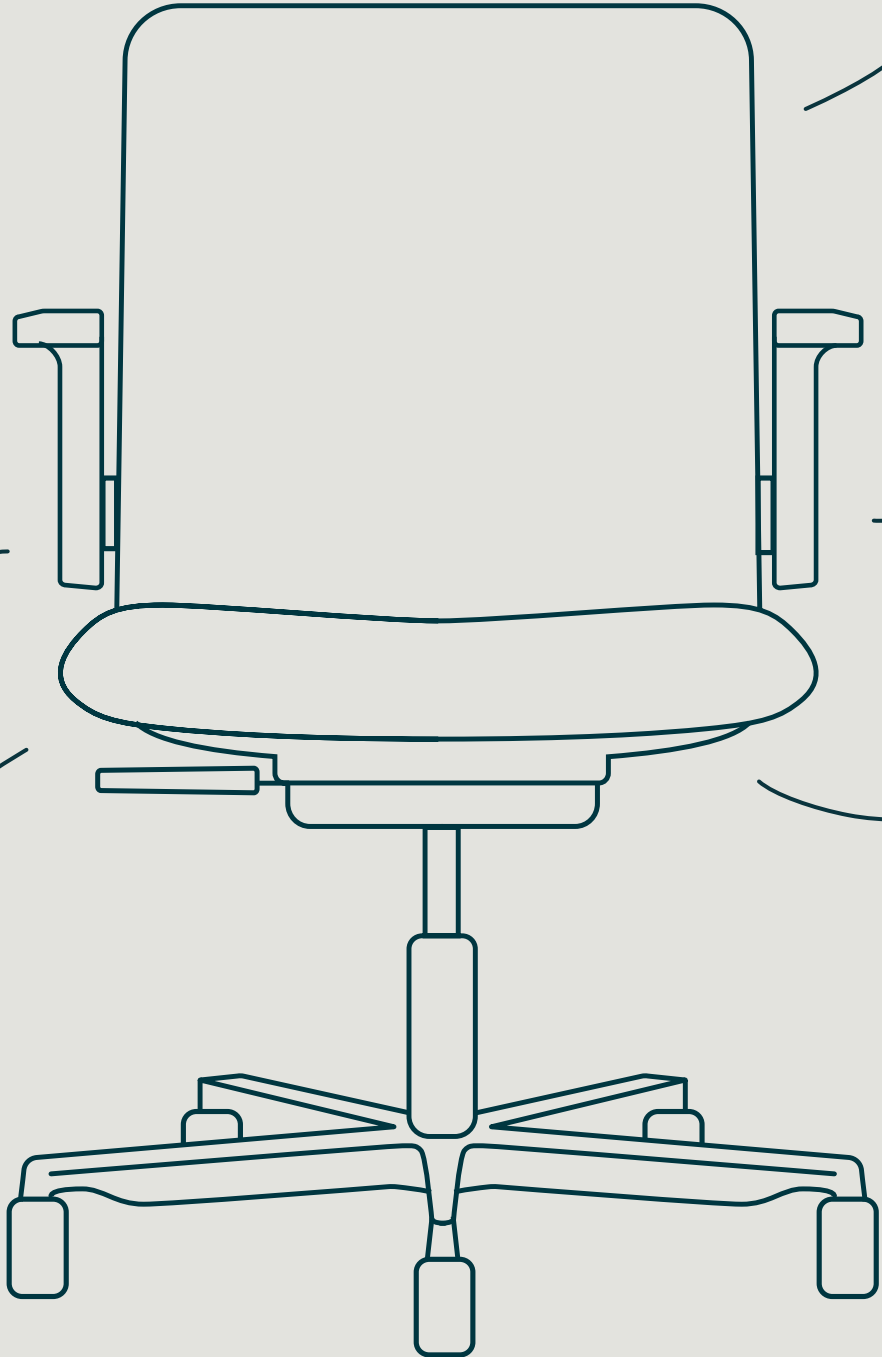
**6.2**  
pounds

Reclaimed  
Fishing Nets



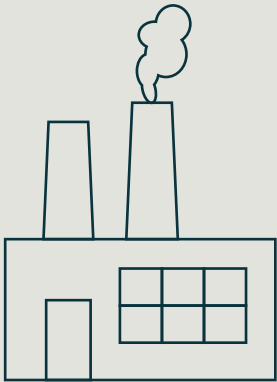
**3.3**  
pounds

Ocean Bound  
Plastic



**1.4**  
pounds

PET Bottles



**4.6**  
pounds

Post-Industrial  
Recycled Content



**6.5**  
pounds

Post-Consumer  
& Post-Industrial  
Mixed Content

Every Path chair leaves the world cleaner by removing and using nearly twenty two pounds of recycled plastic from our planet.



Path is Living Product Certified by ILFI. This third-party certification verifies that Path measurably gives back more than it takes to make, setting a new benchmark for responsible manufacturing.

# Cumulative Impact

For each chair made,  
Path leaves the world better off by:



**1 Chair =  
15 Gallons of  
Water Supplied**

16 Days of Drinking Water



**1 Chair =  
Nearly 10 lbs. of  
Ocean Plastic Upcycled**

A Penguin's Weight in  
Ocean Plastic

**1 Chair =  
6 kg CO<sub>2</sub>e  
Emissions Reduced**

The Average Commuter  
Drive's Worth Of CO<sub>2</sub>e (13.2 lbs.)



**Collective  
Good**

# Design Story

Path builds on Humanscale's 25 years of innovative engineering, developing products that are simple to use, encourage movement and healthy postures, and function and look as new after years of use.

Designed in collaboration with Todd Bracher Studio, our design goal was to create a task chair that is simple, beautiful and challenges our industry standard of complex mechanisms that require manual adjustment.

As a result, Path's patented Gravity Mechanism™ uses "virtual pivot points" for balance and support. Its Auto-Adjusting Technology™ responds uniquely to any sitter's bodyweight creating a Universal Counterbalance™ to support them in any position. This provides an Ergonomically Inclusive™ sitting experience that is customized to each individual as they work throughout the day.



**Taking cues from the evolving design of work environments, Path is our response to contemporary and future work life culture.**

Its softly rounded and minimal silhouette was made to fit a wide range of applications, favoring the trend of a calmer, more welcoming and warmer environment. It is available in a variety of textiles, including FormSense Eco Knit™, fabric and chrome-free leather.

Cross section of seat showing the internal Gravity Mechanism™

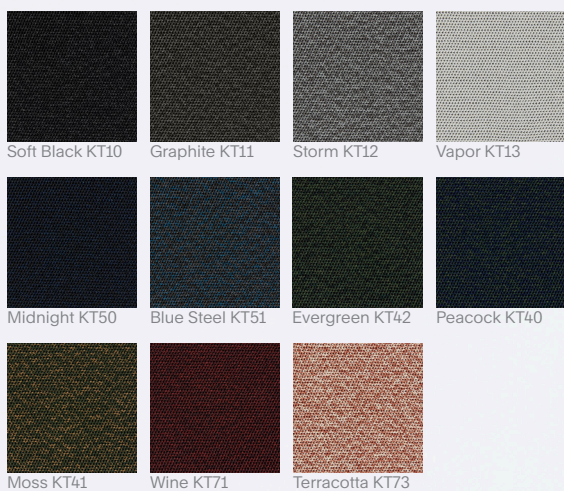


# FormSense Eco Knit™

Equally as innovative as Path's design is our FormSense Eco Knit™, a mesh-like textile that conforms to the body, providing self adjusted lumbar support and a tailored fit to every user, regardless of their height or weight.

Each stitch is individually controlled, creating intricate and systematic patterns with target zones of tension that results in a beautiful and beautifully responsive experience.

Its yarn is made with 100% post-consumer recycled polyester from upcycled plastic bottles. In both the textile design and its application, FormSense Eco Knit™ contributes to Path's robust sustainability story. Since it is knit exactly to the shape of the chair, it eliminates the need for cutting or sewing, and creates zero waste.





# Features

- Incorporates nearly 22 pounds of recycled material, including fishing nets from the ocean, which is the most harmful form of pollution to our marine ecosystems
- Applying the innate laws of physics, instead of bulky levers and knobs, our Gravity Mechanism™ provides automatic support as soon as someone sits in the chair, and even when they recline, simply by using the sitter's weight to provide a custom sitting experience
- Free of Red List Chemicals, the “worst in class” materials, chemicals and elements that are hazardous to humans and our environment
- Available in FormSense Eco Knit™, anti-microbial Lotus fabric, and chrome-free leathers
- 15 Year Warranty\*

\*Full warranty information can be found at [www.humanscale.com/warranty](http://www.humanscale.com/warranty)

# Technical Specifications

	INCHES	MILLIMETERS
Seat Depth	16.30 " – 18.70"	414 - 475
Seat Height	15.55" – 20.87"	395 - 530
Seat Width	20.47"	520
Backrest Height	20.67"	525
Chair Width	23.82" (fixed) 24.41 (adjustable)	605 (fixed) 620 (adjustable)
Backrest Width	19.09"	485
Armrest Height	9.21" (fixed) 7.09" – 10.24" (adjustable)	234 (fixed) 180 – 260 (adjustable)
Armrest Length	9.25"	235
Distance Between Armrests	19.88" (fixed) 19.69" (adjustable)	505 (fixed) 500 (adjustable)
Height	34.65" – 39.76"	880 - 1010
Base Diameter	25"	635

	POUNDS	KILOGRAMS
Chair Weight (Armless)	35.5	16.1
Chair Weight (With Arms)	41	18.6

## Base Options

- Black
- Light Gray
- Polished Aluminum with Black
- Polished Aluminum with Light Gray

## Arm Style Options

- Armless
- Fixed Arms (Plastic and Aluminum)
- Adjustable Arms (Plastic)

## Caster Options

- Hard
- Soft
- Soft Breaking

## Cylinder Options

- Standard
- Low